

HOMES 3505-4005

2 BEDROOM, 2 BATH

INDOOR: 786-787 sf

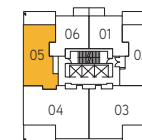
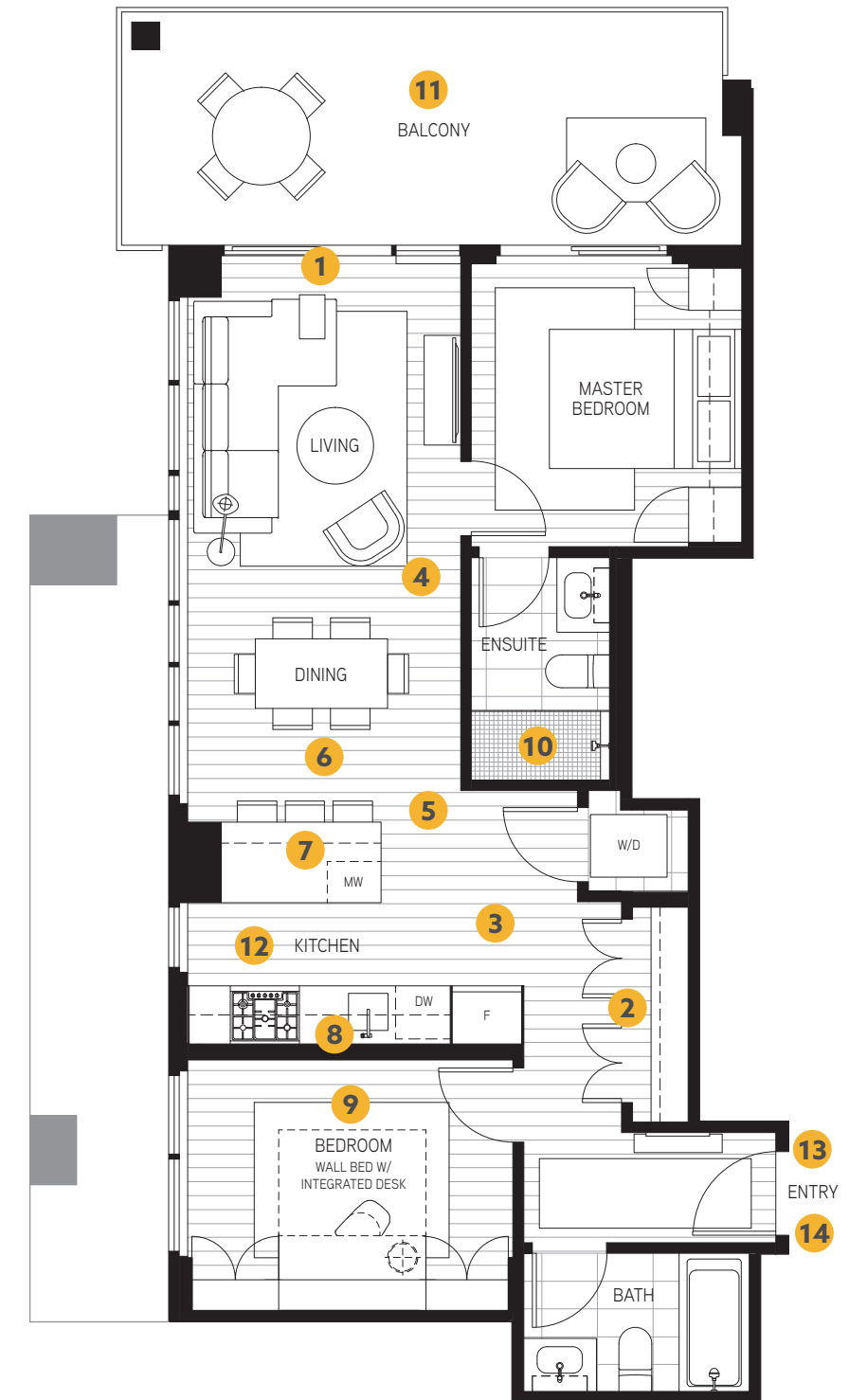
OUTDOOR: 197-216 sf

TOTAL: 983-1,003 sf

FEATURES

- 1 Expansive North-West views overlooking Metrotown's vibrant downtown and the Northshore mountains.
- 2 Large entry closet adds extra storage.
- 3 Laminate flooring throughout main living areas and bedrooms.
- 4 8'8" ceiling height and 9'10" ceiling height on level 40.
- 5 AC throughout your home keeps you comfortable year-round.
- 6 Dining space off the kitchen makes entertaining a breeze.
- 7 Kitchen island with bar-style seating and storage. ⬇️
- 8 Single slab porcelain backsplash is seamlessly lit by undercabinet LED lighting.
- 9 Second bedroom includes a wall-bed with integrated desk to let the space function most efficiently. ⬇️
- 10 Ensuite bathroom shower features mosaic tiles.
- 11 Large balcony extends your living space outdoors with access off the master bedroom and includes a natural gas outlet for your BBQ.
- 12 Appliance Package:
 - Miele 30" stainless steel 5-burner gas cooktop
 - Miele 30" stainless steel wall oven
 - Fulgor Milano 30" integrated refrigerator
 - Fulgor Milano 24" integrated dishwasher
 - 30" Faber hood fan with 400 CFM
 - Microwave with trim kit
 - 27" stacking Electrolux washer and dryer.
- 13 Access to outdoor and in-building amenities as exciting as the neighbourhood these homes are in.
- 14 1 parking stall included with your home.

See the Features sheet for the full list of features enjoyed by every home at Telford on the Walk



LEVEL 35-40



NORTH

Refer to architectural drawings for extent of exterior spaces. See architectural drawings for more details. Home 3505 has concrete paver finish.