

HOMES 3502-4002

2 BEDROOM, 2 BATH

INDOOR: 778 sf

OUTDOOR: 197-216 sf

TOTAL: 975-994 sf

FEATURES

- 1 Expansive North-East views overlooking Metrotown's vibrant downtown and the Northshore mountains.
- 2 Large entry closet adds extra storage.
- 3 Dining space off the kitchen makes entertaining a breeze.
- 4 Laminate flooring throughout main living areas and bedrooms.
- 5 8'8" ceiling height and 9'10" ceiling height on level 40.
- 6 AC throughout your home keeps you comfortable year-round.
- 7 Kitchen island with bar-style seating and storage. ⬇️
- 8 Single slab porcelain backsplash is seamlessly lit by undercabinet LED lighting.
- 9 Second bedroom includes wall-bed with integrated desk to let the space function most efficiently. ⬇️
- 10 Ensuite bathroom shower features mosaic tile.

11 Large balcony extends your living space outdoors with access off the master bedroom and includes a natural gas outlet for your BBQ.

12 Appliance Package:

Miele 30" stainless steel 5-burner gas cooktop

Miele 30" stainless steel wall oven

Fulgor Milano 30" integrated refrigerator

Fulgor Milano 24" integrated dishwasher

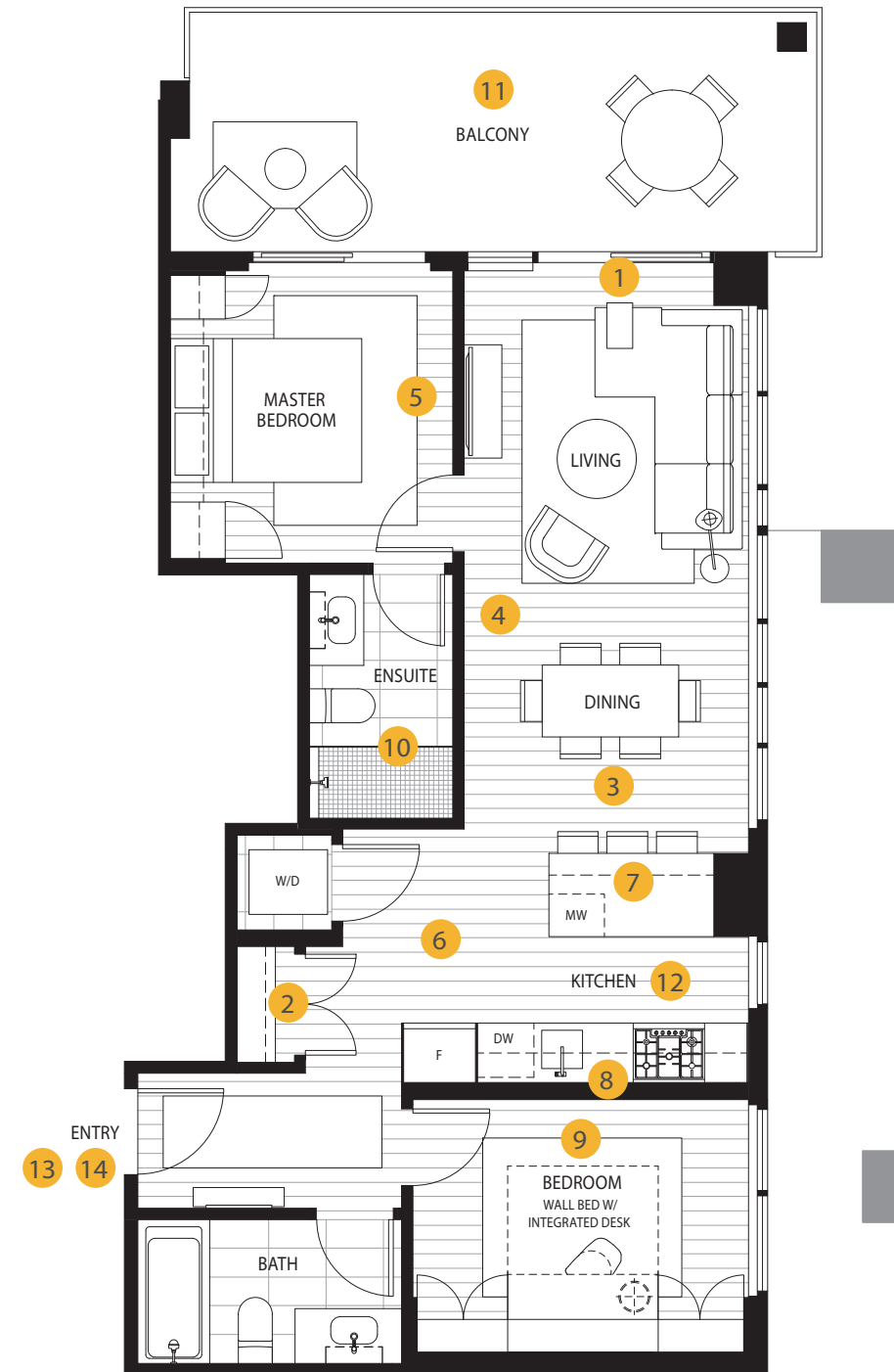
30" Faber hood fan with 400 CFM

Microwave with trim kit

27" stacking Electrolux washer and dryer.

13 Access to outdoor and in-building amenities as exciting as the neighbourhood these homes are in.

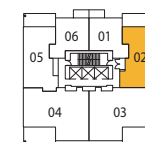
14 1 parking stall included with your home.



See the Features sheet for the full list of features enjoyed by every home at Telford on the Walk



Information contained herein is correct at the time of publication, but is subject to change without notice. Pictures, drawings, digital renderings are for illustrative purposes only and should not be relied upon. E.&O.E. Sales & Marketing by Intracorp Realty Ltd. Telford Avenue Project Limited Partnership.



LEVEL 35-40



NORTH

Refer to architectural drawings for extent of exterior spaces. See architectural for more details. Home 3502 has concrete paver finish.